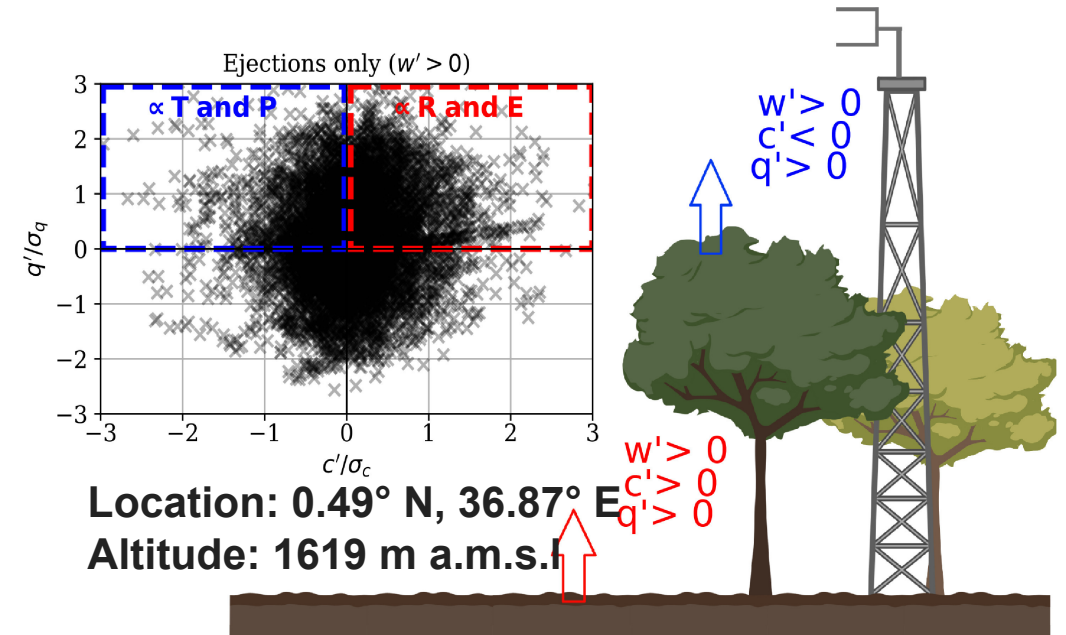
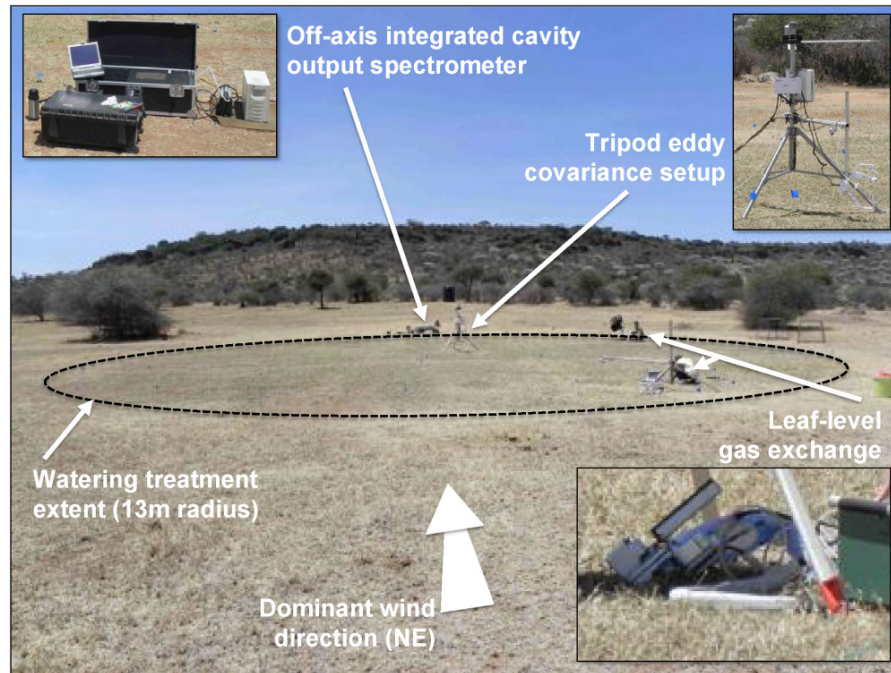


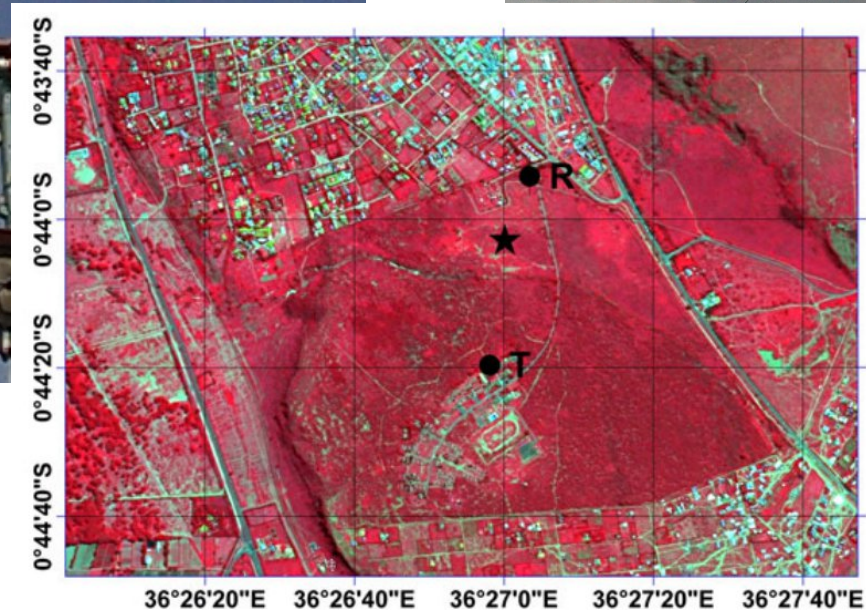
History and Progress on Eddy Covariance Research in East Africa: lessons learned

KE-Mpala Ranch 2010-2011



- $\delta^{2}\text{H}$ isotopic flux partitioning of evapotranspiration over a grass field following a water pulse and subsequent dry down
- Direct partitioning of eddy-covariance water and carbon dioxide fluxes into ground and plant components

LAS and EC System (KWSTI) Naivasha (2012-2021)





KE-Naivasha (2012-2021)

Vandalism

Vandalized equipment and more





KE-Maasai Mara EC tower (Jul 2017-2019)

Liu J. (2019). Downscaling And Validating Satellite- Based Soil Moisture Products Over The Maasai Mara In Kenya

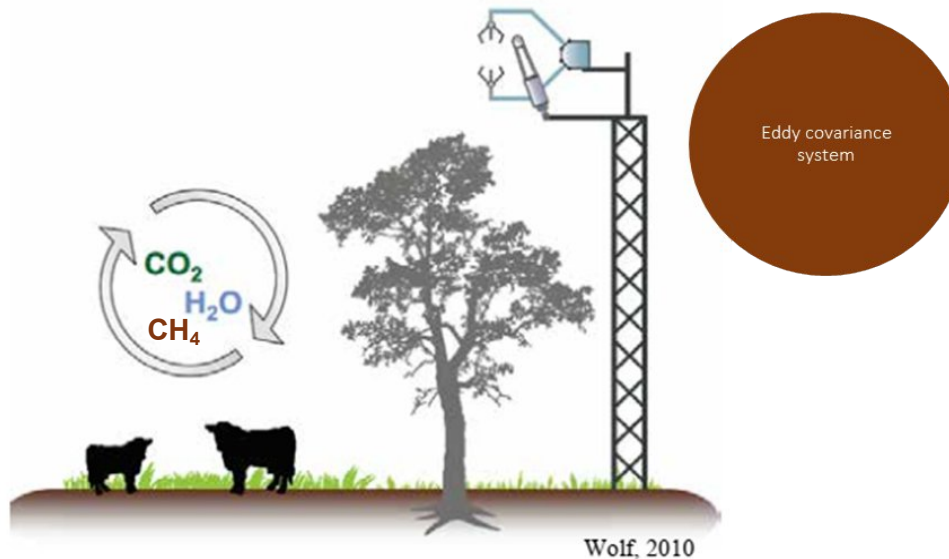
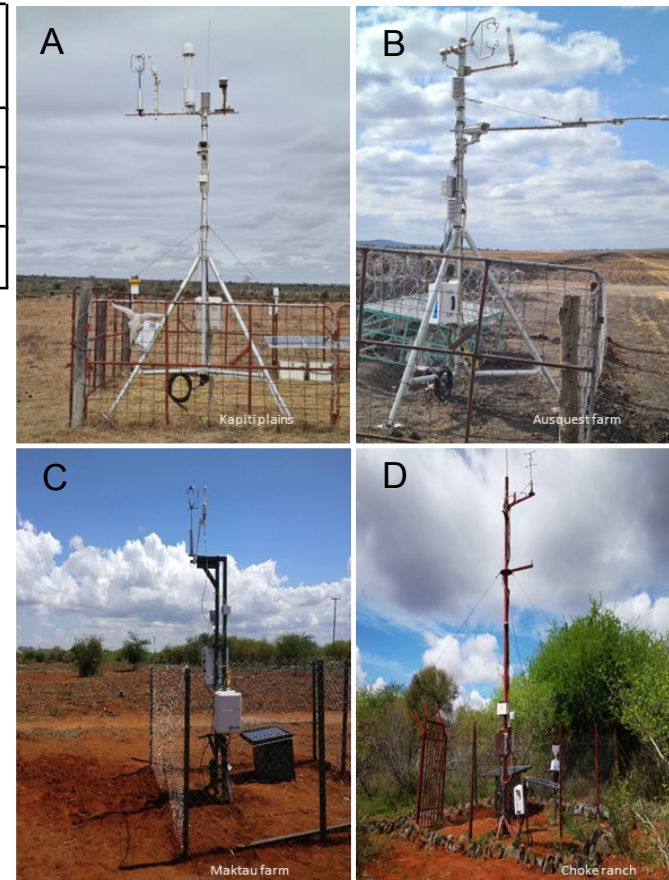


Cosmic ray soil moisture neutron probe sensor

Fire razed by maasai herders

Eddy Covariance since 2018

A	Kapiti Ranch (2018-2020; 2022-Present)
B	Ausquest farm (2019; 2022-Present)
C	Maktau farm (2018-Present)
D	Choke Ranch (2022-Present)



Environmental challenges



System complexity



Latest tower: Lake Victoria

(KU Leuven)



Instagram (Marilyn Roland)

Observations from working with organizations/ stakeholders



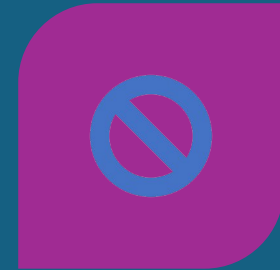
CAPACITY GAP
(TECHNICAL /
RESEARCH)



LACK OF
CONTINUOUS
FUNDING & HIGHER
COSTS DUE TO
LOCATION



THEFT AND
VANDALISM/
DISTURBANCE BY
FIRE & WILDLIFE



LACK OF INTEREST
(MISMATCHED
PRIORITY)

CONTINUOUS EC OBSERVATIONS ARE ONLY POSSIBLE IN PARTNERSHIP WITH
INSTITUTIONS OUTSIDE OF EAST AFRICA