



Practical 1

Introduction and demo

14.8.2025

Open geospatial data, low-cost tools
and participatory approaches for urban
climate services in Africa

<https://kadi-project.eu/>



Participatory Rural Appraisal (PRA)



Participatory Scenario Planning



Participatory Integrated Climate Services for Agriculture (PICSA)

Broad and growing methodological family



Seasonal calendars



Focus group discussions



Participatory mapping

Participatory GIS – Participatory mapping

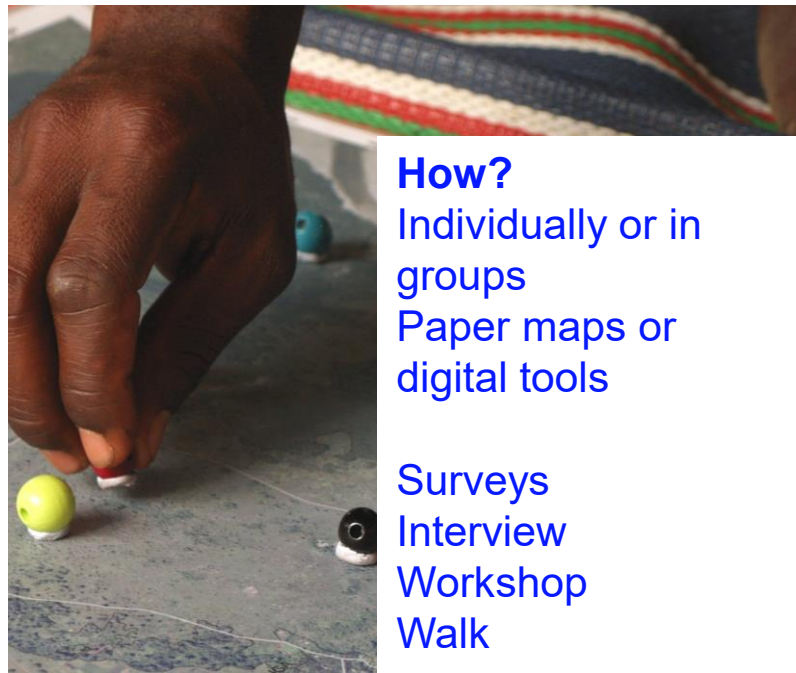
“Includes social knowledge into the process of collection, management and analysis of spatial information” → Based on the belief that those who are affected by a decision have a right to be involved in and influence the decision-making process

- From the 1990's participatory mapping gained momentum in theory and practice, starting from participatory planning and infiltrating to all sectors of the society and large range of academic disciplines we see today
- Participation of local stakeholders and importance to understand experience-based environmental practices, meanings, values and preferences

→ **PLACE-BASED LOCAL KNOWLEDGE**

What?

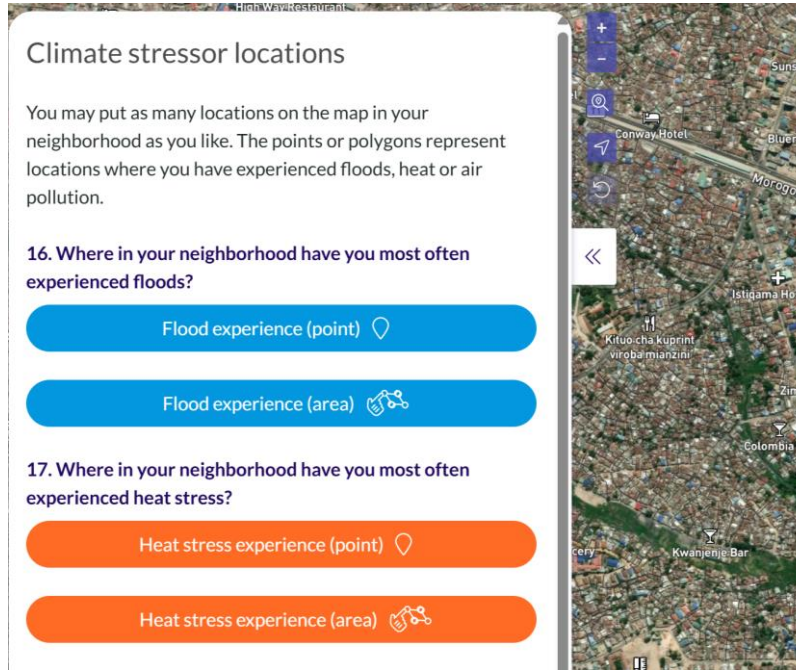
Everyday activities, landuse
Values, meanings
Development preferences
Threats, condition of
environment, crisis events
Ecosystem services
Environmental impacts
Evaluation of drafted plans



How?

Individually or in
groups
Paper maps or
digital tools

Surveys
Interview
Workshop
Walk



Scales?

Block
Neighbourhood
City/village
Regional level
National level

Contact email address:
rachid.ibraimo@akdn.org

A platform that focuses on
strengthening CSOs in
Mozambique by using blended
learning approach:
<https://juntosmocambique.org/>

Add new post +

Map view

Data view

Activity

Collections

Help & Support

Log in / Sign up

Map

Results: 794

Surveys

Source

Clear

☐ Web 0

☐ Mobile 0

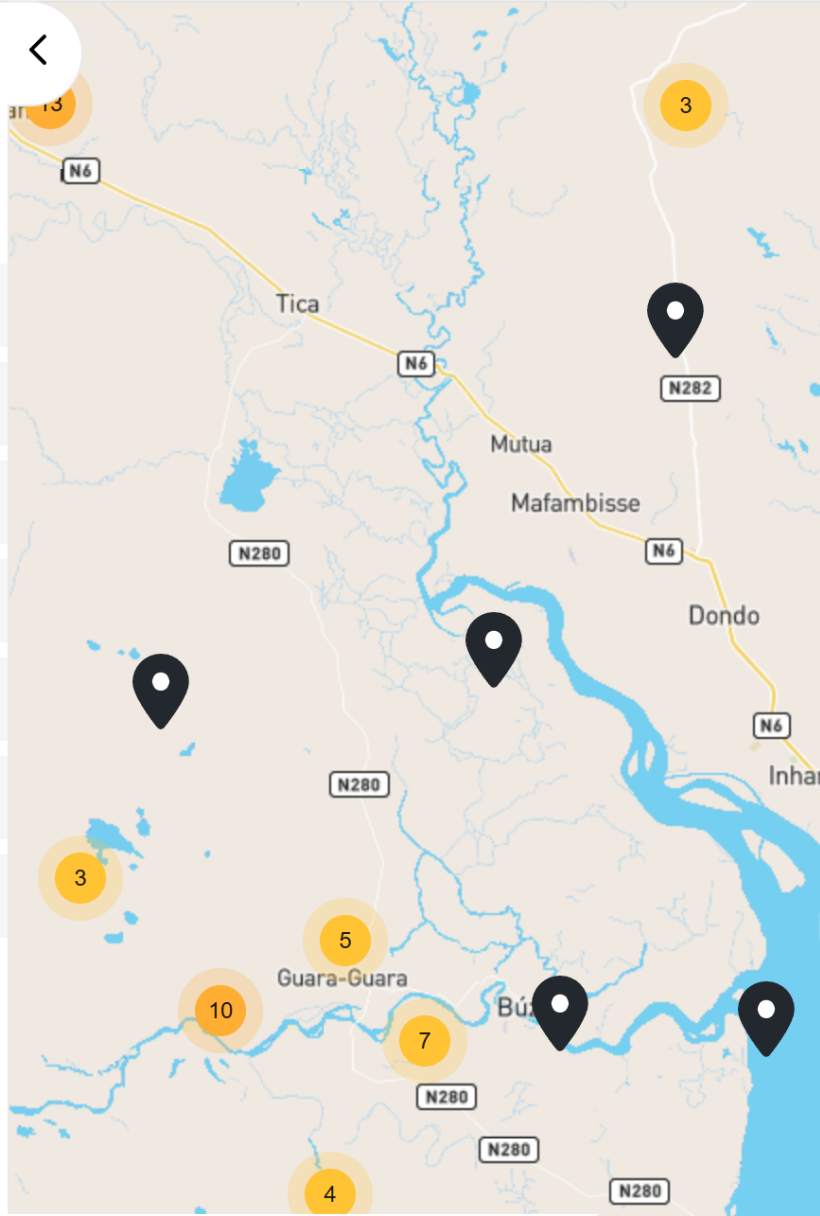
☐ Email 0

☒ SMS 794

☐ Twitter 0

☐ USSD 0

☐ WhatsApp 0



<https://juntosmozambique.ushahidi.io/map>



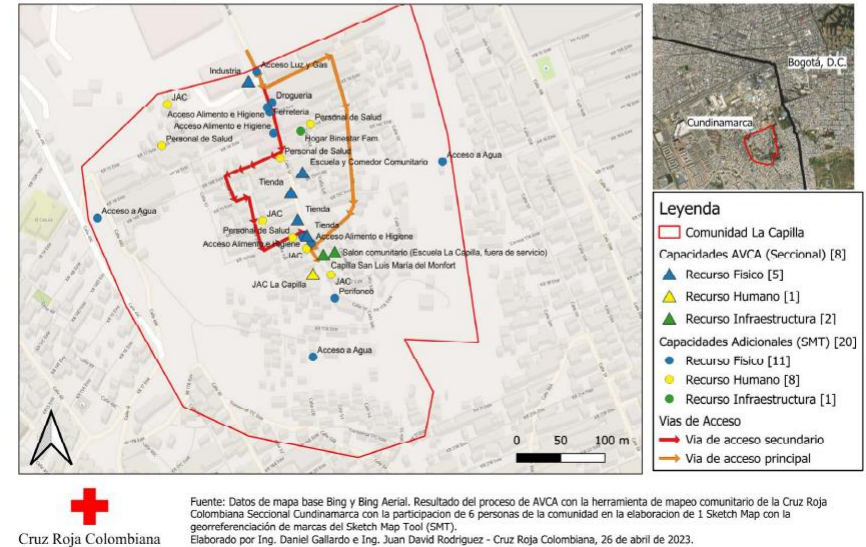
SketchMap Tool

Mapa de amenaza de inundacion estimada - La Capilla

<https://sketch-map-tool.heigit.org/en>



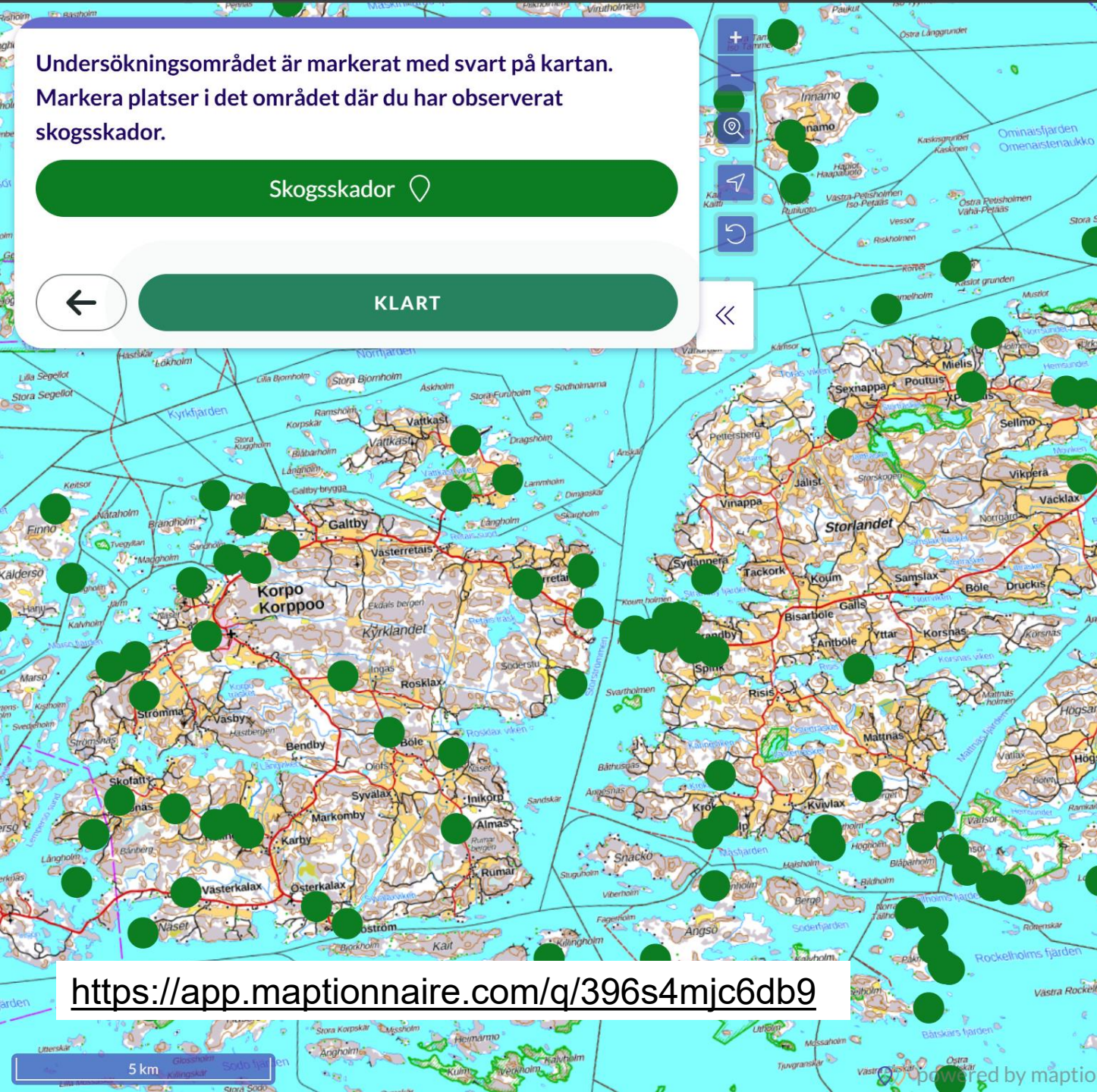
Mapa de Capacidades La Capilla



Undersökningsområdet är markerat med svart på kartan.
Markera platser i det område där du har observerat
skogsskador.

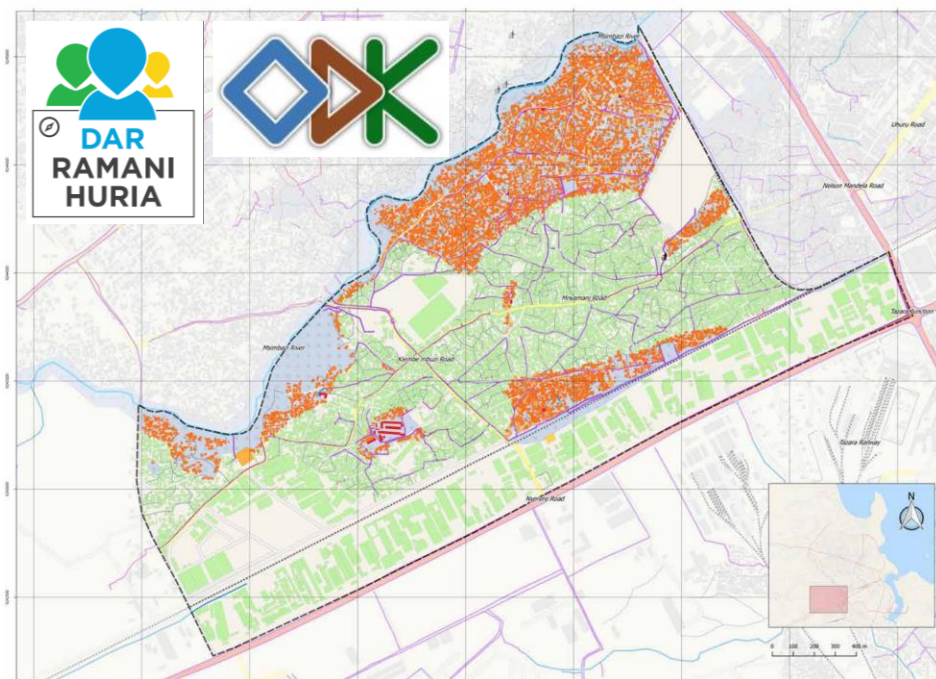
Skogsskador

KLART



<https://app.maptionnaire.com/q/396s4mjc6db9>

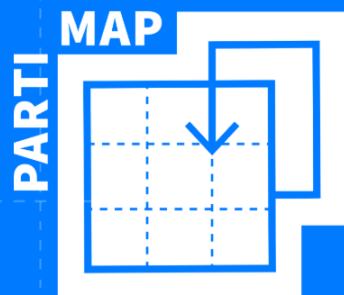
VINGUNGUTI POTENTIAL INUNDATION MAP



FLOOD RESILIENCE IN DAR ES SALAAM 37



<https://ramanihuria.org/en/>



PARTIMAP is a free, easy-to-use and customizable map-based survey for those who believe that affected citizens should have a say in public development projects.

When was the last time you were asked for your opinion on a development project that would impact your everyday life? Billions of euros are being used to renovate our urban spaces, public buildings and transport facilities. But public consultation and stakeholder involvement is often reduced to a formality. It is clear however that in order for a project to be successful, the needs and concerns of the people who use the new infrastructure on a daily basis must be taken into account alongside professional considerations. The modernization of a station is not the goal in itself, but rather to increase the number of people travelling by train. Smart benches don't make a public square a community place, only locals, if they grow to like it

Participatory mapping is a process by which the invaluable knowledge of stakeholders is incorporated into community developments designed for their benefit. PARTIMAP's map-based survey application makes engaging with local stakeholders quicker, simpler and more efficient. It is free to use after registration, has customizable design features, and can also be freely developed as it is an open source platform. Whether you represent a public body, a municipality or a local advocacy group, if you're looking for a smart and transparent way to get to know the views of your community, try PARTIMAP and join its development!

Today!

TASK 1: Testing an online participatory mapping tool *PARTIMAP*

- Register to PARTIMAP and create an online participatory mapping survey
- Follow the example given, or come up with your own questions
- Share your survey link to others, and try someone else's survey

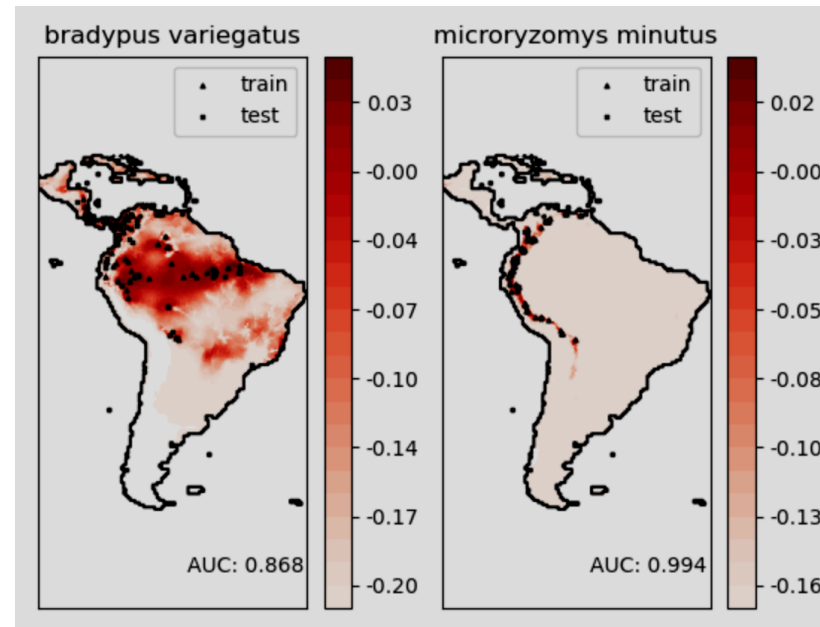
TASK 2: Analysing and visualising participatory mapping data in QGIS

- Download KADI Dar es Salaam pilot data of community members' climate stressor experiences and bring it to QGIS software
- Conduct Kernel density estimation analysis for the datasets
- Visualise and understand the results

Kernel Density Estimation??

Interpolation method suitable for **non-continuous phenomena**, e.g. crime, ecosystem service locations, wildlife sightings, disease outbreak cases...

Vs. **Continuous phenomena**, e.g. temperature, elevation, flood water depth within flooded area... → Suitable interpolation methods e.g. IDW and Kriging and their derivatives



info@project-kadi.eu



Funded by
the European Union

